

## Silencers Series 2901 - 2903 - 2921 2931 - 2938 - 2939 - 2905 - RSW

Ports: M5, G1/8, G1/4, G3/8, G1/2, G3/4, G1

The silencers are indispensable elements for eliminating or reducing the characteristic noise of compressed air during discharge operations. They should always be placed on the outlets of 3/2, 5/2 or 5/3-way valves. When carrying out maintenance, the silencers should be degreased using white spirit or paraffin and compressed air blown through them in the opposite direction to operation.

**Flow rate:** determined with inlet supply 6 bar and output in atmosphere.

**Noise level:** In order to determine the level of noise, a test is carried out using a phonometer. Placing the phonometer one meter away from the application at the same height for a period of ten seconds gives us an average reading of the noise generated.



### GENERAL DATA

Construction	body with male and female thread
Materials used for body	OT58 brass (2901-2903) - coppering steel (2921-2931) - polyethylene (2938-2939)
Materials used for silencing	stainless steel (2901-2903)- bronze (sintered) (2921-2931) - polyethylene (2938-2939)
Ports	M5 - G1/8 - G1/4 - G3/8 - G1/2 - G3/4 - G1

Noise level: determined with 6 bar inlet supply and output in atmosphere, at a distance of 1 meter. Flow rate: determined with 6 bar inlet supply and output in atmosphere.

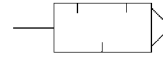
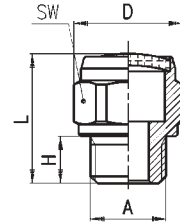


AUTOMATIC VALVES

**Silencers Series 2901**

**DIMENSIONS**

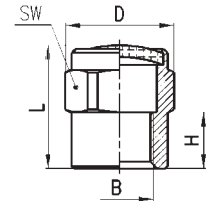
Mod.	A	D	H	L	SW	Pressure range Kg/cm <sup>2</sup> - bar	Flow Nl/min	Noise treshold db (A)
<b>2901 1/8</b>	G1/8	15,3	6	17,5	14	max. 10	694	75
<b>2901 1/4 - 17</b>	G1/4	18,5	8	22	17	max. 10	1013	78
<b>2901 1/4 - 22</b>	G1/4	23,5	8	24	22	max. 10	1629	92
<b>2901 3/8</b>	G3/8	23,5	9	25	22	max. 10	1474	76
<b>2901 1/2</b>	G1/2	29,5	10	31	27	max. 10	3418	86
<b>2901 3/4</b>	G3/4	34	13	35	32	max. 6	4089	87
<b>2901 1</b>	G1	43	15	43,5	40	max. 6	7632	88



**Silencers Series 2903**

**DIMENSIONS**

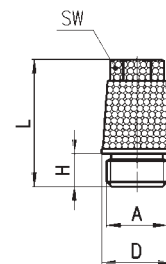
Mod.	B	D	H	L	SW	Pressure range Kg/cm <sup>2</sup> - bar	Flow Nl/min	Noise treshold db (A)
<b>2903 1/8</b>	G1/8	15,3	8	17,5	14	max. 10	665	74



**Silencers Series 2921**

**DIMENSIONS**

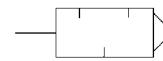
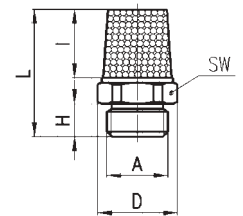
Mod.	A	D	H	L	SW	Pressure range Kg/cm <sup>2</sup> - bar	Flow Nl/min	Noise treshold db (A)
<b>2921 1/8</b>	G1/8	11,5	4,5	21,5	8	max. 10	1555	78
<b>2921 1/4</b>	G1/4	15	6	28	10	max. 10	2430	79
<b>2921 3/8</b>	G3/8	19	7	36	13	max. 10	4759	84
<b>2921 1/2</b>	G1/2	23	8	43,5	15	max. 10	6795	84
<b>2921 3/4</b>	G3/4	30	9	56	19	max. 10	12703	78
<b>2921 1</b>	G1	37	11	68,5	24	max. 10	>15000	80



**Silencers Series 2931**

**DIMENSIONS**

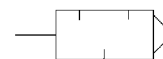
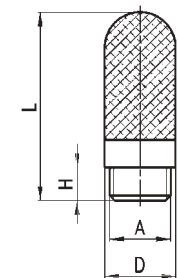
Mod.	A	D	H	I	L	SW	Pressure range Kg/cm <sup>2</sup> - bar	Flow Nl/min	Noise threshold d(A)
<b>2931 M5</b>	M5	7,7	4	8	16,5	7	max. 10	450	69
<b>2931 1/8</b>	G1/8	13,2	4,5	12,7	21	12	max. 10	1819	83
<b>2931 1/4</b>	G1/4	16,2	6	16,5	27	15	max. 10	2675	85
<b>2931 3/8</b>	G3/8	20,5	7	23,5	35	19	max. 10	4863	83
<b>2931 1/2</b>	G1/2	25,6	8	26,5	40,5	23	max. 10	7085	84
<b>2931 3/4</b>	G3/4	33,4	9	35	51,5	30	max. 10	12733	78
<b>2931 1</b>	G1	40	11	46	66	36	max. 10	>15000	82



**Silencers Series 2938**

**DIMENSIONS**

Mod.	A	D	H	L	Pressure range Kg/cm <sup>2</sup> - bar	Flow Nl/min	Noise threshold d(A)
<b>2938 M5</b>	M5	7	4,1	21	max. 10	546	67
<b>2938 1/8</b>	G1/8	13	5,7	34	max. 10	1441	75
<b>2938 1/4</b>	G1/4	15,5	7	42,5	max. 10	2752	79
<b>2938 3/8</b>	G3/8	18,5	11,5	67,5	max. 10	4735	73
<b>2938 1/2</b>	G1/2	23,5	11	77	max. 10	8534	86

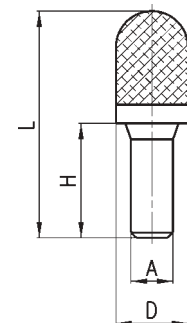


**Silencers Serie 2939**

See flow controllers in section 5.03.

**DIMENSIONS**

Mod.	A	D	H	L	Pressure range Kg/cm <sup>2</sup> - bar	Flow Nl/min	Noise threshold d(A)
<b>2939 4</b>	4	7	16	32	max. 10	335	80
<b>2939 6</b>	6	12,5	20,5	45	max. 10	623	79
<b>2939 8</b>	8	13,5	21,5	43,5	max. 10	1229	89
<b>2939 10</b>	10	15,5	26,5	57,5	max. 10	2650	87

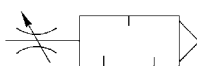




AUTOMATIC VALVES

**Flow controllers Mod. SCO 2905...**

See flow controllers section 5.03



**Flow controllers Series RSW**

See flow controllers (exhaust)  
section 5.03.

