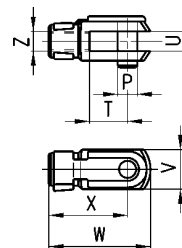
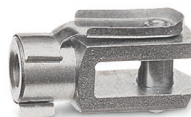


Rod fork end Mod. G-90...

DIMENSIONS

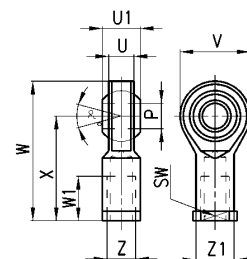
Mod.	ø cyl.	øP	T	U	V	W	X	Z
G-90-25-32	32	10	20	10	20	52	40	M10x1.25
G-90-40	40	12	24	12	24	62	48	M12x1.25
G-90-50-63	50-63	16	32	16	32	83	64	M16x1.5
G-90-80-100	80-100	20	40	20	40	105	80	M20x1.5
G-90-125	125	30	55	30	55	148	110	M27x2



Swivel ball joint Mod. GA-90...

DIMENSIONS

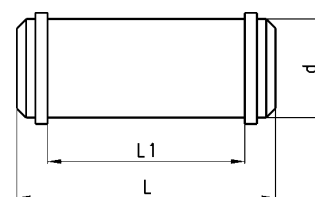
Mod	ø cyl.	øP (H7)	U	U1	V	W	W1	X	Z	Z1	α°	SW
GA-90-32	32	10	10.5	14	28	56	20	43	M10x1.25	15	8	17
GA-90-40	40	12	12	16	32	65	22	50	M12x1.25	17.5	8	19
GA-90-50-63	50-63	16	15	21	42	83	28	64	M16x1.5	22	8.5	22
GA-90-80-100	80-100	20	18	25	50	100	33	77	M20x1.5	27.5	9	30
GA-90-125	125	30	25	37	70	145	51	110	M27x2	40	17	41



Clevis pin Mod. S-90...

DIMENSIONS

Mod.	ø cyl.	d	L	L1
S-90-32	32	10	51	45
S-90-40	40	12	58	52
S-90-50	50	12	66	60
S-90-63	63	16	76	70
S-90-80	80	16	97	90
S-90-100	100	20	120	110
S-90-125	125	25	139	130



Piston rod lock nut Mod. U-90...

DIMENSIONS

Mod.	ø cyl.	d	H	SW
U-90-25-32	32	M10x1.25	6	17
U-90-40	40	M12x1.25	7	19
U-90-50-63	50-63	M16x1.5	8	24
U-90-80-100	80-100	M20x1.5	9	30
U-90-125	125	M27x2	12	41

