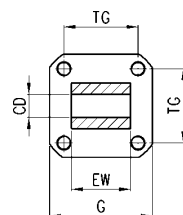
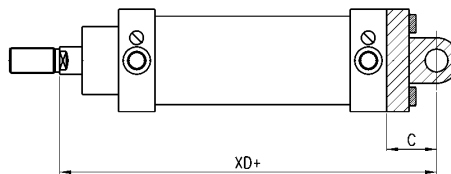


Rear trunnion, male Mod. L...

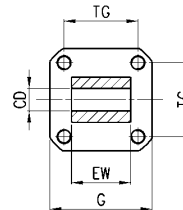
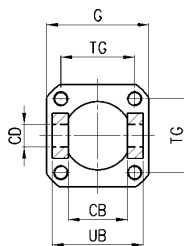
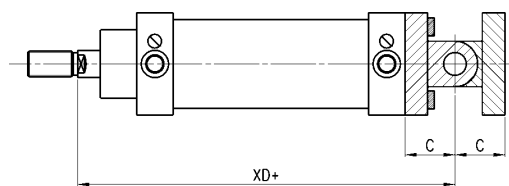


(+ add the stroke)

DIMENSIONS

Mod.	∅ cyl.	EW	∅ CD	XD	C	G	TG
L-90-32	32	26	10	142	22	45	32,5
L-90-40	40	28	12	160	25	55	38
L-90-50	50	32	12	170	27	65	46,5
L-90-63	63	40	16	190	32	75	56,5
L-90-80	80	50	16	210	36	95	72
L-90-100	100	60	20	230	41	115	89
L-90-125	125	70	25	275	50	140	110

Swivel combination Mod. I...

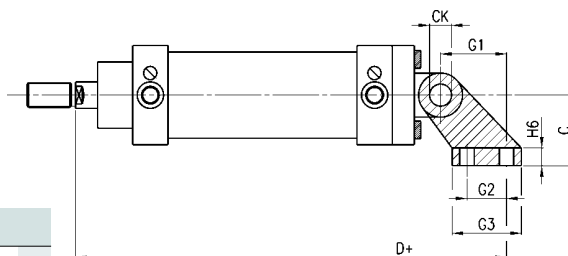


(+ add the stroke)

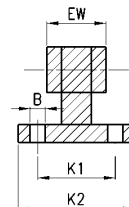
DIMENSIONS

Mod.	∅ cyl.	EW	UB	CB	∅ CD	XD	C	G	TG
I-90-32	32	26	45	26	10	142	22	45	32,5
I-90-40	40	28	52	28	12	160	25	55	38
I-90-50	50	32	60	32	12	170	27	65	46,5
I-90-63	63	40	70	40	16	190	32	75	56,5
I-90-80	80	50	90	50	16	210	36	95	72
I-90-100	100	60	110	60	20	230	41	115	89
I-90-125	125	70	130	70	25	275	50	140	110

90° male trunnion Mod. ZC-90...



(+ add the stroke)



DIMENSIONS

Mod.	∅ cyl.	EM	∅ CK	G1	C	H6	K2	K1	S5 H13	D	G2	G3	L3 max	L5 max	M
ZC-90-32	32	26	10	21	32	8	51	38	6,6	163	18	31	10	1,6	11
ZC-90-40	40	28	12	24	36	10	54	41	6,6	184	22	35	15	1,6	11
ZC-90-50	50	32	12	33	45	12	65	50	9	203	30	45	16	1,6	15
ZC-90-63	63	40	16	37	50	12	67	52	9	227	35	50	16	1,6	15
ZC-90-80	80	50	16	47	63	14	86	66	11	257	40	60	20	2,5	18
ZC-90-100	100	60	20	55	71	15	96	76	11	285	50	70	20	2,5	18
ZC-90-125	125	70	25	70	90	20	124	94	14	345	60	90	30	3,2	20