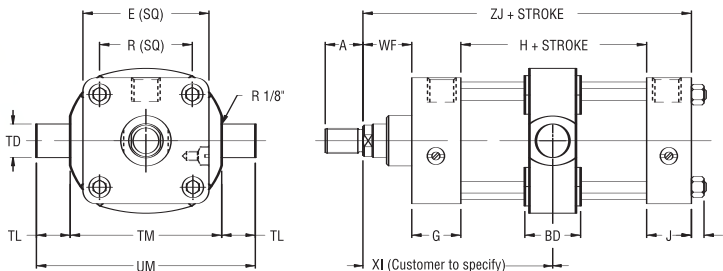


Intermediate Trunnion (NFPA Type MT4 Mount)

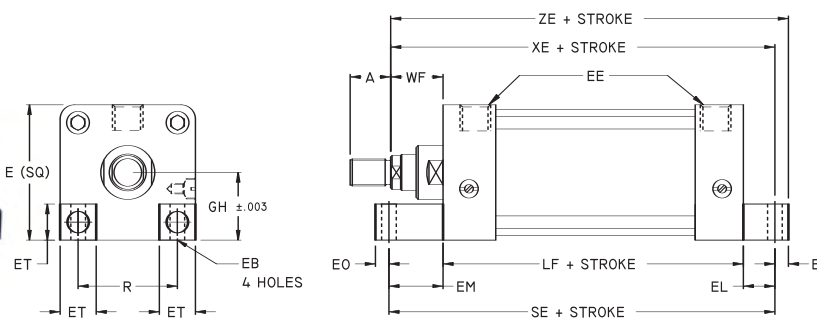
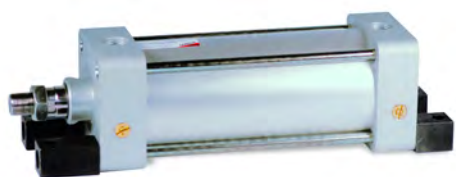


DIMENSIONS

Mod.	Bore	Rod ø	A	BD	E	G	H+	J	K	TD	TL	TM	R	UM	WF	XI	ZI+
F-71-1.50	1½"	5/8"	¾"	1¾"	2"	1.37"	1.29"	0.87"	¼"	1"	1"	2½"	1.43"	4½"	1"	*	4½"
F-71-2.00	2"	5/8"	¾"	1¾"	2½"	1.33"	1.29"	0.83"	5/16"	1"	1"	3"	1.84"	5"	1"	*	4½"
	2"	1"	1½"	1¾"	2½"	1.33"	1.29"	0.83"	5/16"	1"	1"	3"	1.84"	5"	1½"	*	5"
F-71-2.50	2½"	5/8"	¾"	1¾"	3"	1.38"	1.25"	0.88"	5/16"	1"	1"	3½"	2.19"	5½"	1"	*	4¾"
	2½"	1"	1½"	1¾"	3"	1.38"	1.25"	0.88"	5/16"	1"	1"	3½"	2.19"	5½"	1½"	*	5½"
F-71-3.25	3¼"	1"	1½"	1¾"	3¾"	1.61"	1.45"	1.11"	3/8"	1"	1"	4½"	2.76"	6½"	1½"	*	5½"
	3¼"	1½"	1½"	1¾"	3¾"	1.61"	1.45"	1.11"	3/8"	1"	1"	4½"	2.76"	6½"	1½"	*	5½"
F-71-4.00	4"	1"	1½"	1¾"	4½"	1.61"	1.45"	1.11"	3/8"	1"	1"	5½"	3.32"	7¼"	1½"	*	5½"
	4"	1½"	1½"	1¾"	4½"	1.61"	1.45"	1.11"	3/8"	1"	1"	5½"	3.32"	7¼"	1½"	*	5½"
F-71-5.00	5"	1"	1½"	1¾"	5½"	1.58"	1.80"	1.06"	½"	1"	1"	6¼"	4.10"	8¼"	1½"	*	5½"
	5"	1½"	1½"	1¾"	5½"	1.58"	1.80"	1.06"	½"	1"	1"	6¼"	4.10"	8¼"	1½"	*	6½"

*Customer to specify

Side End Lug (NFPA Type MS7 Mount)



DIMENSIONS

Mod.	Bore	Rod ø	A	E	EB	EE	EL	EM	EO	ET	GH	LF+	R	SE+	WF	XE+	ZE+
BE-71-1.50	1½"	5/8"	¾"	2"	1/32"	3/8"	3/4"	1½"	¼"	3/16"	.993"	3¾"	1.43"	5½"	1"	5¾"	5¾"
BE-71-2.00	2"	5/8"	¾"	2½"	1/32"	3/8"	5/16"	1¾"	5/16"	1/8"	1.243"	3¾"	1.84"	5½"	1"	5¾"	5¾"
	2"	1"	1½"	2½"	1/32"	3/8"	5/16"	1¾"	5/16"	1/8"	1.243"	3¾"	1.84"	5½"	1½"	5¾"	6¼"
BE-71-2.50	2½"	5/8"	¾"	3"	1/32"	3/8"	1½"	1¾"	5/16"	3/16"	1.493"	3¾"	2.19"	6¼"	1"	5¾"	6¼"
	2½"	1"	1½"	3"	1/32"	3/8"	1½"	1¾"	5/16"	3/16"	1.493"	3¾"	2.19"	6¼"	1½"	5¾"	6½"
BE-71-3.25	3¼"	1"	1½"	3¾"	1/32"	½"	¾"	1½"	3/8"	1"	1.868"	4¼"	2.76"	6¾"	1½"	6¾"	7¼"
	3¼"	1½"	1½"	3¾"	1/32"	½"	¾"	1½"	3/8"	1"	1.868"	4¼"	2.76"	6¾"	1½"	6¾"	7¼"
BE-71-4.00	4"	1"	1½"	4½"	1/32"	½"	1"	1¾"	3/8"	1½"	2.243"	4¼"	3.32"	6¾"	1½"	6¾"	7"
	4"	1½"	1½"	4½"	1/32"	½"	1"	1¾"	3/8"	1½"	2.243"	4¼"	3.32"	6¾"	1½"	6¾"	7¼"