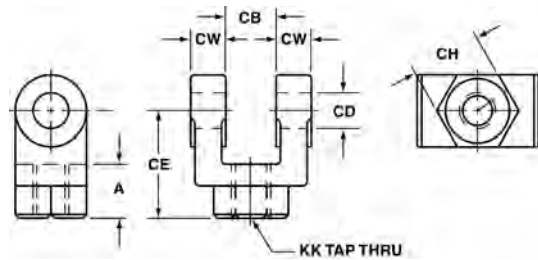


Female Rod Clevis

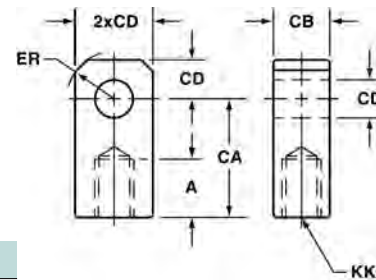
(Mates w/Male Eye Bracket)
Use "S" Pivot Pin

**DIMENSIONS**

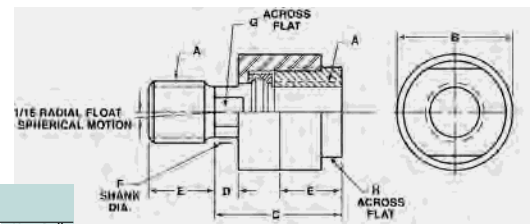
Mod.	Rod ϕ	Bore	A	CB	CD	CE	CH	CW	KK
G-7/16-20	5/8"	1 1/2", 2", 2 1/2"	3/4"	3/4"	1/2"	1 1/2"	1"	1/2"	7/16-20
G-3/4-16	1"	2", 2 1/2", 3 1/4", 4", 5"	1 1/8"	1 1/4"	3/4"	2 3/8"	1 1/4"	5/8"	3/4-16
G-1-14	1 3/8"	3 1/4", 4", 5"	1 5/8"	1 1/2"	1"	3 1/8"	1 1/2"	3/4"	1-14
G-1-1/4-12	1 3/8"	3 1/4", 4", 5"	2"	2"	1 3/8"	4 1/8"	2"	1"	1 1/4-12

Rod Eye

(Mates w/Clevis Bracket)
Use "S" Pivot Pin

**DIMENSIONS**

Mod.	Rod ϕ	Bore	A	CA	CB	CD	ER	KK
GE-7/16-20	5/8"	1 1/2", 2", 2 1/2"	3/4"	1 1/2"	3/4"	1/2"	5/8"	7/16-20
GE-3/4-16	1"	2", 2 1/2", 3 1/4", 4", 5"	1 1/8"	2 1/8"	1 1/4"	3/4"	7/8"	3/4-16
GE-1-14	1 3/8"	3 1/4", 4", 5"	1 5/8"	2 5/8"	1 1/2"	1"	1 3/8"	1-14
GE-1-1/4-12	1 3/8"	3 1/4", 4", 5"	2"	3 3/8"	2"	1 3/8"	1 1/8"	1 1/4-12

Rod End Alignment Coupler**DIMENSIONS**

Mod.	Thread Size-A	B	C	D	E	F	G	H	Max Pull At Yield
GW-7/16-20	7/16-20	1 1/4"	2"	1/2"	3/4"	5/8"	7/16"	1 1/8"	10,000 psi
GW-1/2-20	1/2-20	1 1/4"	2"	1/2"	3/4"	5/8"	7/16"	1 1/8"	14,000 psi
GW-7/8-14	7/8-14	1 3/4"	2 5/8"	5/8"	1 1/8"	3/32"	7/8"	1 1/2"	34,000 psi
GW-3/4-16	3/4-16	1 3/4"	2 5/8"	5/8"	1 1/8"	3/32"	7/8"	1 1/2"	34,000 psi
GW-1-14	1-14	2 1/2"	2 5/8"	1/2"	1 5/8"	1 3/8"	1 1/4"	2 1/4"	64,000 psi
GW-1-1/4-12	1 1/4-12	2 1/2"	2 5/8"	1/2"	1 5/8"	1 3/8"	1 1/4"	2 1/4"	64,000 psi