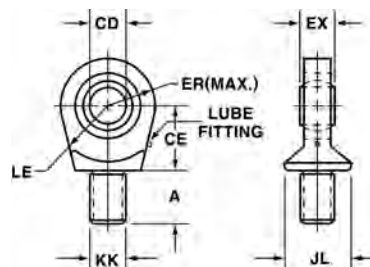


Spherical Rod Eye

(Mates w/Spherical Clevis Bracket)
Use "SM" Pivot Pin

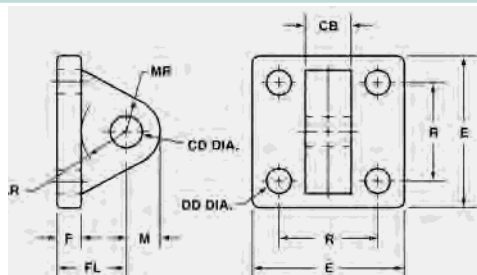


DIMENSIONS

Mod.	Rod ø	Bore	A	CD (-.0005)	CE	ER	EX	KK	LE	JL
GM-7/16-20	5/8"	1 1/2", 2", 2 1/2"	1/8"	1/2"	7/8"	3/8"	7/8"	7/8-20	3/4"	7/8"
GM-3/4-16	1"	2", 2 1/2", 3 1/4", 4", 5"	1"	3/4"	1 1/4"	1 1/4"	2 1/2"	3/4-16	1 1/8"	1 5/8"
GM-1-14	1 3/8"	3 1/4", 4", 5"	1 1/2"	1"	1 7/8"	1 3/8"	2"	1-14	1 7/8"	1 1/2"

Male Eye Bracket

(Mates w/Female Rod Clevis)
Use "S" Pivot Pin

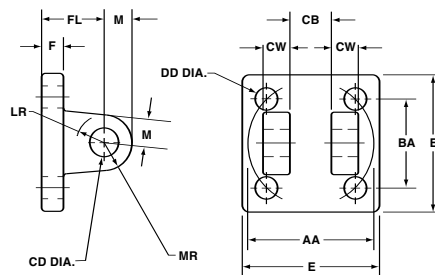


DIMENSIONS

Mod.	CB	CD	DD	E	F	FL	LR	M	MR	R
LE-7/16-20	3/4"	1/2"	1 3/32"	2 1/2"	3/8"	1 1/8"	3/4"	1/2"	9/16"	1.63"
LE-3/4-16	1 1/4"	3/4"	1 7/32"	3 1/2"	5/8"	1 7/8"	1 1/4"	3/4"	7/8"	2.56"
LE-1-14	1 1/2"	1"	2 1/32"	4 1/2"	7/8"	2 3/8"	1 1/2"	1"	1 1/4"	3 1/4"
LE-1-1/4-12	2"	1 3/8"	2 1/32"	5"	7/8"	3"	2 1/8"	1 3/8"	1 5/8"	3.81"

Clevis Bracket

(Mates w/Rod Eye)
Use "S" Pivot Pin



DIMENSIONS

Mod.	AA	BA	CB	CD	CW	DD	E	F	FL	LR	M	MR
CE-7/16-20	2.3"	1 1/8"	.765"	1/2"	1/2"	3/8"	2 1/2"	3/8"	1 1/8"	1/2"	1/2"	9/16"
CE-3/4-16	2.9"	2 1/8"	1.265"	3/4"	5/8"	1/2"	3"	5/8"	1 7/8"	1"	3/4"	1 1/8"
CE-1-14	4.6"	3 3/4"	1.515"	1"	3/4"	5/8"	4 1/2"	3/4"	2 1/4"	1 1/4"	1"	1 1/8"
CE-1-1/4-12	5.4"	3 3/8"	2.032"	1 3/8"	1"	5/8"	5"	7/8"	3"	1 7/8"	1 3/8"	1 3/4"