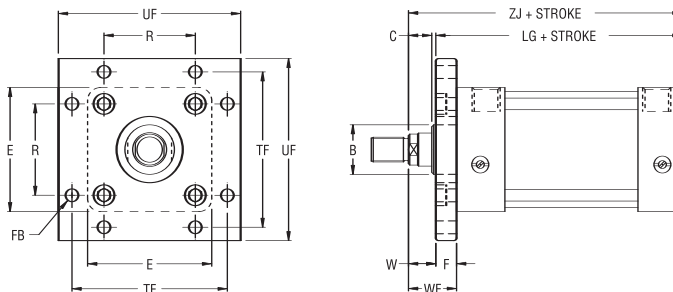


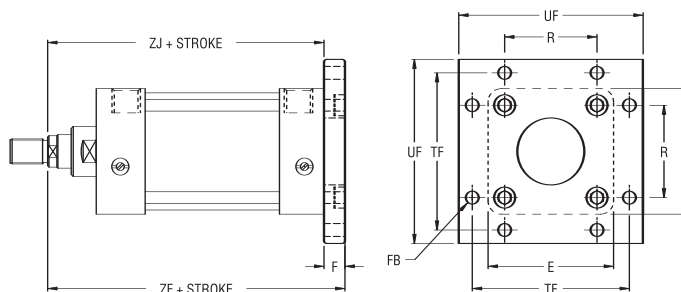
Head Square Flange (NFA Type MF5 Mount)



DIMENSIONS

Mod.	Bore	Rod ø	B	C	E	F	FB	LG+	R	TF	UF	W	WF	ZJ+
ES-71-1.50	1½"	⅝"	1⅛"	⅜"	2"	⅜"	¼"	4"	1.43"	2¼"	3⅜"	⅝"	1"	4⅝"
	2"	⅝"	1⅛"	⅜"	2½"	⅜"	⅝"	4"	1.84"	3⅜"	4⅞"	⅝"	1"	4⅝"
ES-71-2.00	2"	1"	1½"	⅝"	2½"	⅜"	⅝"	4"	1.84"	3⅜"	4⅞"	1"	1⅜"	5"
	2½"	⅝"	1⅛"	⅜"	3"	⅜"	⅝"	4½"	2.19"	3⅜"	4⅞"	⅝"	1"	4¾"
ES-71-2.50	2½"	1"	1½"	⅝"	3"	⅜"	⅝"	4½"	2.19"	3⅜"	4⅞"	1"	1⅜"	5⅝"
	3¼"	1"	1½"	⅝"	3¾"	⅝"	⅜"	4⅞"	2.76"	4⅞"	5½"	¾"	1⅜"	5⅝"
ES-71-3.25	3¼"	1⅜"	2"	⅞"	3¾"	⅝"	⅜"	4⅞"	2.76"	4⅞"	5½"	1"	1⅜"	5⅝"
	4"	1"	1½"	⅝"	4½"	⅝"	⅜"	4⅞"	3.32"	5⅞"	6¼"	¾"	1⅜"	5⅝"
ES-71-4.00	4"	1⅜"	2"	⅞"	4½"	⅝"	⅜"	4⅞"	3.32"	5⅞"	6¼"	1"	1⅜"	5⅝"
	5"	1"	1½"	⅝"	5½"	⅝"	½"	5⅞"	4.10"	6⅞"	7⅞"	¾"	1⅜"	5⅝"
ES-71-5.00	5"	1⅜"	2"	⅞"	5½"	⅝"	½"	5⅞"	4.10"	6⅞"	7⅞"	1"	1⅜"	6⅞"

Cap Square Flange (NFA Type MF6 Mount)



DIMENSIONS

Mod.	Bore	Rod ø	B	C	E	F	FB	LG+	R	TF	UF	W	WF	ZF+	ZJ+
DS-71-1.50	1½"	⅝"	1⅛"	⅜"	2"	⅜"	¼"	4"	1.43"	2¼"	3⅜"	⅝"	1"	5"	4⅝"
	2"	⅝"	1⅛"	⅜"	2½"	⅜"	⅝"	4"	1.84"	3⅜"	4⅞"	⅝"	1"	5"	4⅝"
DS-71-2.00	2"	1"	1½"	⅝"	2½"	⅜"	⅝"	4"	1.84"	3⅜"	4⅞"	1"	1⅜"	5⅝"	5"
	2½"	⅝"	1⅛"	⅜"	3"	⅜"	⅝"	4½"	2.19"	3⅜"	4⅞"	⅝"	1"	5⅝"	4¾"
DS-71-2.50	2½"	1"	1½"	⅝"	3"	⅜"	⅝"	4½"	2.19"	3⅜"	4⅞"	1"	1⅜"	5⅝"	5⅝"
	3¼"	1"	1½"	⅝"	3¾"	⅝"	⅜"	4⅞"	2.76"	4⅞"	5½"	¾"	1⅜"	6¼"	5⅝"
DS-71-3.25	3¼"	1⅜"	2"	⅞"	3¾"	⅝"	⅜"	4⅞"	2.76"	4⅞"	5½"	1"	1⅜"	6½"	5⅝"
	4"	1"	1½"	⅝"	4½"	⅝"	⅜"	4⅞"	3.32"	5⅞"	6¼"	¾"	1⅜"	6¼"	5⅝"
DS-71-4.00	4"	1⅜"	2"	⅞"	4½"	⅝"	⅜"	4⅞"	3.32"	5⅞"	6¼"	1"	1⅜"	6½"	5⅝"
	5"	1"	1½"	⅝"	5½"	⅝"	½"	5⅞"	4.10"	6⅞"	7⅞"	¾"	1⅜"	6½"	5⅝"
DS-71-5.00	5"	1⅜"	2"	⅞"	5½"	⅝"	½"	5⅞"	4.10"	6⅞"	7⅞"	1"	1⅜"	6¾"	6⅞"

The company reserves the right to vary models and dimensions without notice. These products are designed for industrial applications and are not suitable for sale to the general public.