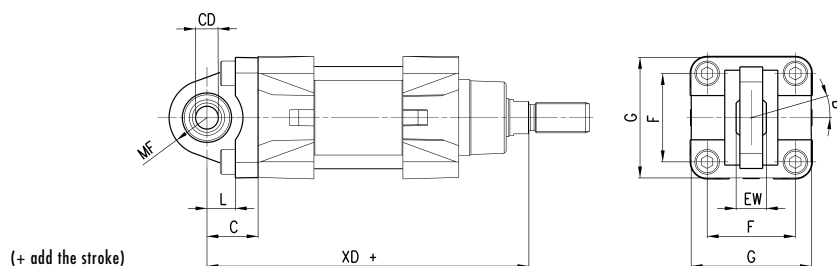


## Rear Trunnion ball-joint Mod. R\*...

Material: aluminium  
 \*not according to standard.  
 The following is supplied:  
 N° 1 cerniera  
 N° 1 snodo sferico  
 N° 4 screws

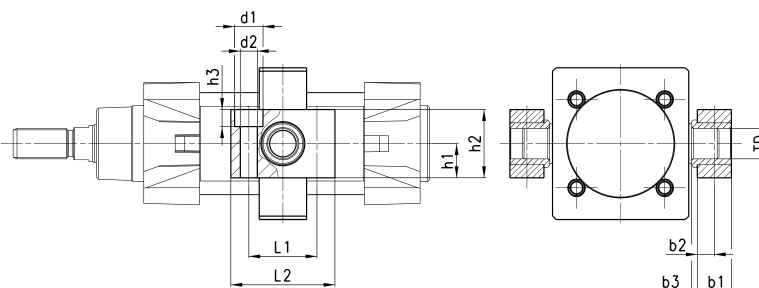
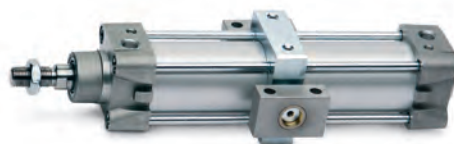


## DIMENSIONS

Mod.	∅	CD <sup>H9</sup>	L	C	XD ±1.6	MR	F	G	EW -0.1	B°
<b>R-41-32</b>	32	10	12	22	142	16	32,5	45	14	13
<b>R-41-40</b>	40	12	15	25	160	20	38	52	16	13
<b>R-41-50</b>	50	12	15	27	170	20	46,5	63	16	15
<b>R-41-63</b>	63	16	20	32	190	24	56,5	73	21	15
<b>R-41-80</b>	80	16	24	36	210	24	72	95	21	15
<b>R-41-100</b>	100	20	29	41	230	30	89	115	25	15

## Counter bracket for centre trunnion Mod. BF...

Material: aluminium.  
 The following is supplied:  
 N° 2 boccole  
 N° 2 supports



## DIMENSIONS

Mod.	∅	TD	b1	b2	b3	L1	L2	h1	h2	h3	d1	d2
<b>BF-32</b>	32	12	15	7,5	3	32	46	15	30	6,8	11	6,6
<b>BF-40-50</b>	40-50	16	18	9	3	36	55	18	36	9	15	9
<b>BF-63-80</b>	63-80	20	20	10	3	42	65	20	40	11	18	11
<b>BF-100-125</b>	100-125	25	25	12,5	3,5	50	75	25	50	13	20	14