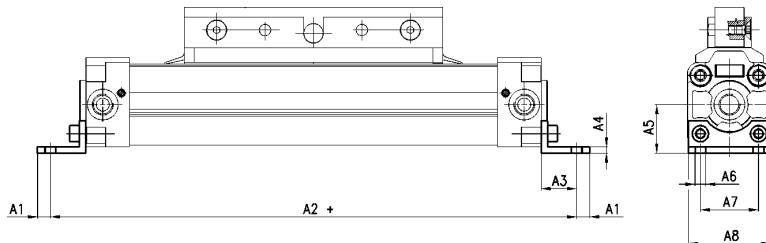


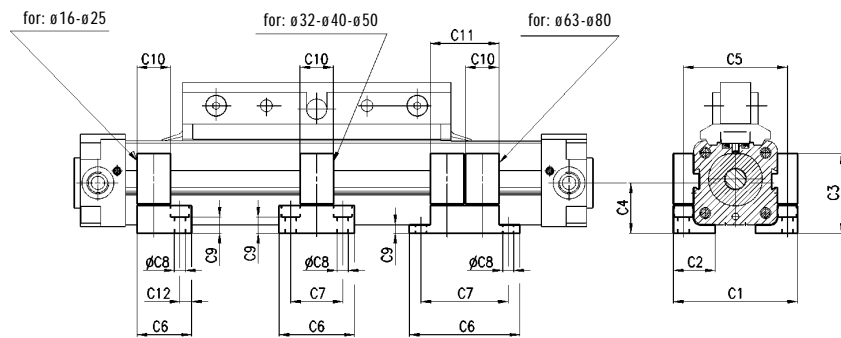
**Cylinders Mod. B-50...**

**DIMENSIONS**

Mod.	∅ cyl.	A1	A2	A3	A4	A5	A6	A7	A8
<b>B-50-16</b>	16	3	150	12	3	15	3.6	18	26
<b>B-50-25</b>	25	6.5	232	18.5	3	22	5.5	27	39
<b>B-50-32</b>	32	8	286	22	4	30	6.6	36	51
<b>B-50-40</b>	40	13.5	325	16.5	4	38	9	30	62
<b>B-50-50</b>	50	13.5	375	16.5	6	48	9	40	75
<b>B-50-63</b>	63	11	460	19	6	57	11	48	93
<b>B-50-80</b>	80	18.5	555	21.5	6	72	14	60	116



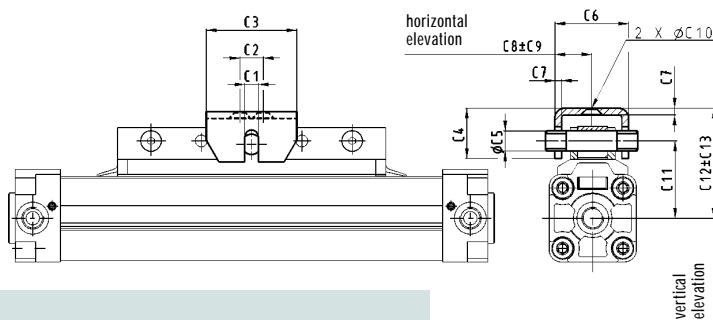
**Cylinders Mod. BH-50...**



**DIMENSIONS**

Mod.	∅ cyl.	C1	C2	C3	C4	C5	C6	C7	C8	C9	C10	C11	C12
<b>BH-50-16</b>	16	42	12	25	15	34	20	-	3.4	4.5	12	-	4
<b>BH-50-25</b>	25	56	21	32.6	22	47	22	-	5.5	10.1	12	-	5
<b>BH-50-32</b>	32	74	25	47.5	30	62	45	31	6.6	9.7	20	-	-
<b>BH-50-40</b>	40	85	35	56	38	73	60	45	6.6	18.2	20	-	-
<b>BH-50-50</b>	50	98	32	67.5	48	86	60	45	6.6	29.7	20	-	-
<b>BH-50-63</b>	63	126	50	78.5	57	109	74	56	9	11	20	41	-
<b>BH-50-80</b>	80	155	65	96	72	135	80	60	11	14.5	20	41	-

**Cylinders Mod. CF-50...**



**DIMENSIONS**

Mod.	∅ cyl.	C1	C2	C3	C4	C5	C6	C7	C8	C9	C10	C11	C12	C13
<b>CF-50-25</b>	25	6	16	40.8	22.9	7.9	31.5	3	15.8	1.5	5.6	38	55.2	4.8
<b>CF-50-32</b>	32	9.3	50	76.4	27.4	11.9	38.1	3.8	19	1.5	7.1	48.5	68.9	6.4
<b>CF-50-40</b>	40	9.3	50	76.4	24.4	11.9	38.1	3.8	19	1.5	7.1	51	73.8	4.8
<b>CF-50-50</b>	50	9.3	80	114.6	37.1	11.9	43.9	6.1	22	3.3	8.6	59	88.4	6.4
<b>CF-50-63</b>	63	12.7	100	134.6	42.2	15.9	43.9	6.1	22	3.3	8.6	70	107.2	4.8
<b>CF-50-80</b>	80	12.7	125	159.5	42.2	19.9	50.3	6.1	25.1	3.3	11	86	123.2	4.8

The company reserves the right to vary models and dimensions without notice. These products are designed for industrial applications and are not suitable for sale to the general public.