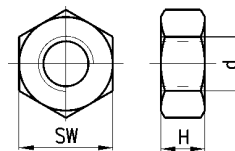


Piston Rod Lock Nut Mod. U...

DIMENSIONS

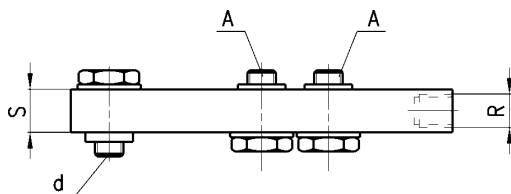
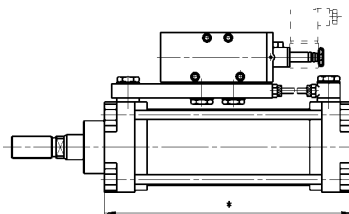
Mod.	ø cyl.	d	H	SW
U-25-32	32	M10x1.25	6	17
U-40	40	M12x1.25	7	19
U-50-63	50-63	M16x1.5	8	24
U-80-100	80-100	M20x1.5	9	30
U-41-125	125	M27x2	12	41
U-160-200	160-200	M36x2	14	50



Example of assembly

The mounting subbase, Mod. PCV, enables the valve or solenoid valve to be mounted directly on the cylinder, thus forming a compact pneumatic operating unit which is easy to install. The subbase is fixed onto the cylinder using the screws, Mod. 1635 or the unidirectional flow controllers, Mod. SCU. The other end of the plate has a threaded port which allows the tube to be connected, by means of a fitting, to the other end-cap.

Note: the minimum possible stroke is 100mm.



*d = mounting on the cylinder using Mod.1635 o Mod. SCU.

DIMENSIONS

Mod.	A	R	S	d*
PCV-32	G1/8	G1/8	16	G1/8
PCV-40-50	G1/8	G1/4	16	G1/4
PCV-63-80	G1/4	G1/4	16	G3/8