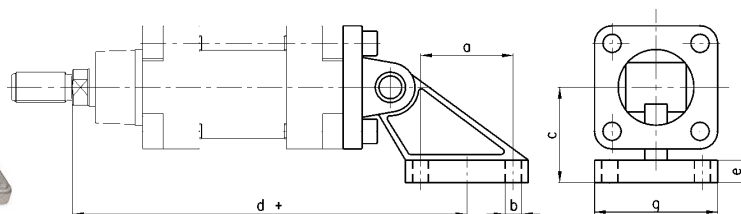


90° swivel combination Mod. Z*...

*not according to standard.

PRODUCTION OF THIS PRODUCT HAS NOW CEASED



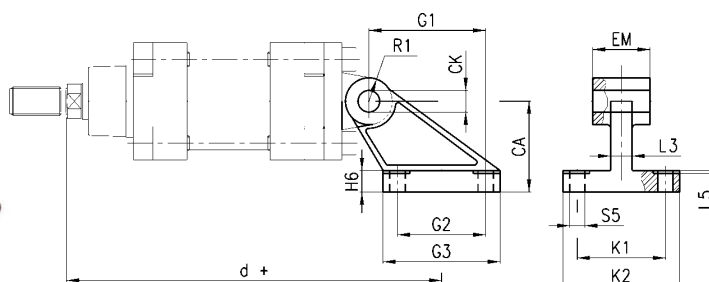
(+ add the stroke)

DIMENSIONS

| Mod. | ∅ | a | b | c | d | e | g |
|----------|-----|-----|------|-----|-------|----|-----|
| Z-41-32 | 32 | 33 | 6.5 | 32 | 166 | 10 | 45 |
| Z-41-40 | 40 | 40 | 6.5 | 45 | 202 | 10 | 52 |
| Z-41-50 | 50 | 49 | 8.5 | 45 | 205.5 | 12 | 65 |
| Z-41-63 | 63 | 59 | 8.5 | 63 | 247 | 12 | 75 |
| Z-41-80 | 80 | 75 | 10.5 | 63 | 257 | 14 | 95 |
| Z-41-100 | 100 | 90 | 10.5 | 90 | 299 | 16 | 115 |
| Z-41-125 | 125 | 110 | 12.5 | 90 | 360 | 20 | 140 |
| Z-41-160 | 160 | 140 | 16.5 | 140 | 420 | 20 | 180 |
| Z-41-200 | 200 | 175 | 16.5 | 140 | 480 | 25 | 220 |

90° male trunnion according to CETOP RP 107P Mod. ZC...

CETOP RP 107P.



(+ add the stroke)

DIMENSIONS

| Mod. | ∅ | M H13 | CK H9 | S5 H13 | d | K1 JS14 | K2 MAX | L3 MAX | G1 JS14 | L5 MAX | G2 JS14 | EM | G3 SJ14 | CA JS15 | H6 | R1 MAX |
|--------|-----|-------|-------|--------|-------|---------|--------|--------|---------|--------|---------|----|---------|---------|----|--------|
| ZC-32 | 32 | 11 | 10 | 6.6 | 154 | 38 | 51 | 10 | 21 | 1.6 | 18 | 26 | 31 | 32 | 8 | 10 |
| ZC-40 | 40 | 11 | 12 | 6.6 | 173 | 41 | 54 | 15 | 24 | 1.6 | 22 | 28 | 35 | 36 | 10 | 11 |
| ZC-50 | 50 | 15 | 12 | 9 | 188 | 50 | 65 | 16 | 33 | 1.6 | 30 | 32 | 45 | 45 | 12 | 13 |
| ZC-63 | 63 | 15 | 16 | 9 | 209.5 | 52 | 67 | 16 | 37 | 1.6 | 35 | 40 | 50 | 50 | 12 | 15 |
| ZC-80 | 80 | 18 | 16 | 11 | 237 | 66 | 86 | 20 | 47 | 2.5 | 40 | 50 | 60 | 63 | 14 | 15 |
| ZC-100 | 100 | 18 | 20 | 11 | 260 | 76 | 96 | 20 | 55 | 2.5 | 50 | 60 | 70 | 71 | 15 | 19 |
| ZC-125 | 125 | 20 | 25 | 14 | 315 | 94 | 124 | 30 | 70 | 3.2 | 60 | 70 | 90 | 90 | 20 | 22.5 |