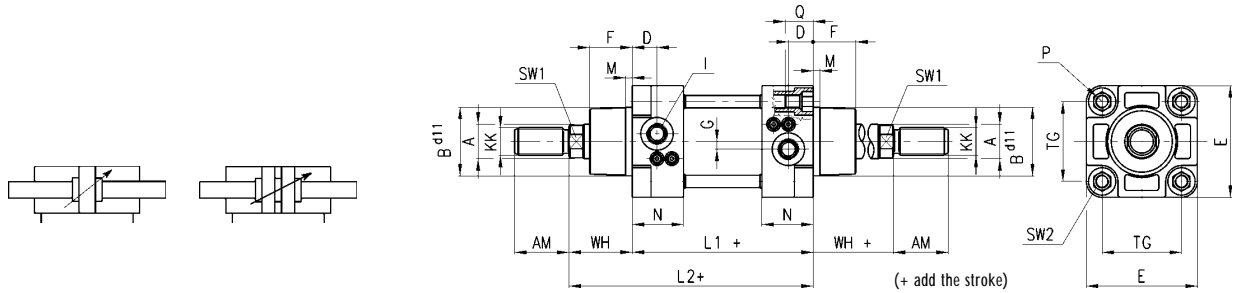
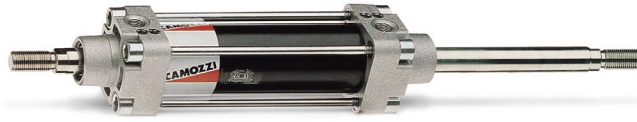


Cylinders Series 40

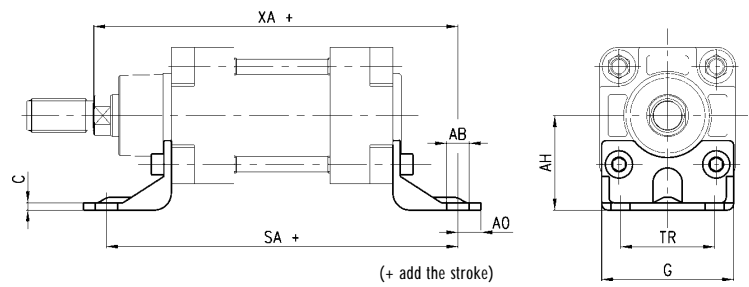
Through rod.



DIMENSIONS

Series	∅	A	KK	B	D	G	F	AM	I	WH	L1	M	N	P	Q	TG	E	SW1	SW2	Cushion stroke
40	32	12	M10x1.25	30	19.2	5	18	22	G1/8	26	94	5	27.5	M6	16	32.5	47	10	6	17
40	40	16	M12x1.25	35	19.5	5	22	24	G1/4	30	105	5	30	M6	16	38	54	13	6	24
40	50	20	M16x1.5	40	18.3	4.5	25	32	G1/4	37	106	5	30	M8	16	46.5	65	17	10	22
40	63	20	M16x1.5	45	21.5	7	25	32	G3/8	37	121	5	36	M8	16	56.5	75	17	10	27
40	80	25	M20x1.5	45	21.5	7	30	40	G3/8	46	128	5	36	M10	18.5	72	97	22	12	33
40	100	25	M20x1.5	55	21.6	7.5	35	40	G1/2	51	138	5	36	M10	18.5	89	116	22	12	38
40	125	32	M27x2	60	25	10	42	54	G1/2	65	160	6	41	M12	23	110	136	27	14	43
40	160	40	M36x2	65	25	12	53.5	72	G3/4	80	180	6	45	M16	26	140	176	36	17	45
40	200	40	M36x2	75	25	12	63.5	72	G3/4	95	180	6	45	M16	26	175	216	36	17	49

Foot mount Mod. B...



DIMENSIONS

Mod.	∅	C	SA ±1,25	XA ±1,25	TR JS 14	G	AB	AH JS 15	A0
B-41-32	32	3.5	142	144	32	46	7	32	11
B-41-40	40	3.5	161	163	36	52	9	36	9
B-41-50	50	3.5	170	175	45	63	9	45	12
B-41-63	63	5	185	190	50	75	9	50	13
B-41-80	80	5	210	216	63	95	12	63	16
B-41-100	100	5	220	230	75	115	14	71	15
B-41-125	125	8	250	270	90	135	16	90	15
B-41-160	160	10	300	320	115	175	18	115	20
B-41-200	200	11	320	345	135	215	22	135	30