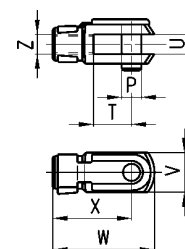
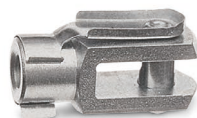


Rod Fork End Mod. G...

ISO 8140.

DIMENSIONS

Mod.	ø cyl.	P	T	U	V	W	X	Z
G-12-16	12	6	12	6	12	31	24	M6x1
G-20	16	10	16	8	16	42	32	M8x1.25
G-25-32	20÷40	10	20	10	20	52	40	M10x1.25
G-40	50-63	12	24	12	24	62	48	M12x1.25
G-50-63	80	16	32	16	32	83	64	M16x1.5
G-80-100	100	20	40	20	40	105	80	M20x1.5

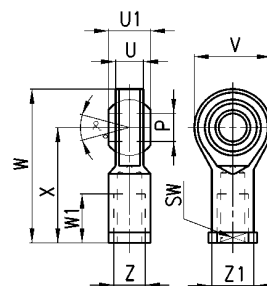


Swivel Ball Joint Mod. GA...

ISO 8139.

DIMENSIONS

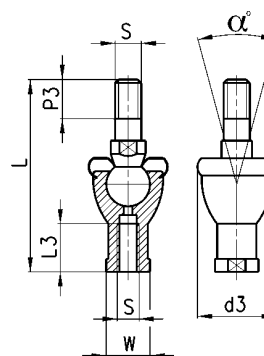
Mod.	ø cyl.	øP (H7)	U	U1	V	W	W1	X	Z	Z1	α°	SW
GA-12-16	12	6	6.5	9	20	40	12	30	M6x1	10	13	11
GA-20	16	8	9	12	20	48	16	36	M8x1.25	10	13	11
GA-32	20÷40	10	10.5	14	28	56	20	43	M10x1.25	15	8	17
GA-40	50-63	12	12	16	32	65	22	50	M12x1.25	17.5	8	19
GA-50-63	80	16	15	21	42	83	28	64	M16x1.5	22	8.5	22
GA-80-100	100	20	18	25	50	10	33	77	M20x1.5	27.5	9	30



Piston Rod Socket Joint Mod. GY...

DIMENSIONS

Mod.	ø cyl.	S	L	L3	W	P3	d3	α°
GY-12-16	12	M6x1	40	14	12	11	22	30°
GY-20	16	M8x1.25	65	16	14	12	28	30°
GY-32	20÷40	M10x1.25	74.5	18	17	15	32	30°
GY-40	50-63	M12x1.25	85	20	19	17	36	30°
GY-50-63	80	M16x1.5	114	27	22	23	47	22°
GY-80-100	100	M20x1.5	135.5	38	30	25	58	15°



Piston Rod Lock Unit Mod. U...

ISO 5589.

DIMENSIONS

Mod.	ø cyl.	d	H	SW
U-12-16	12	M6x1	4	10
U-20	16	M8x1.25	5	13
U-25-32	20÷40	M10x1.25	6	17
U-40	50-63	M12x1.25	7	19
U-50-63	80	M16x1.5	8	24
U-80-100	100	M20x1.5	9	30

