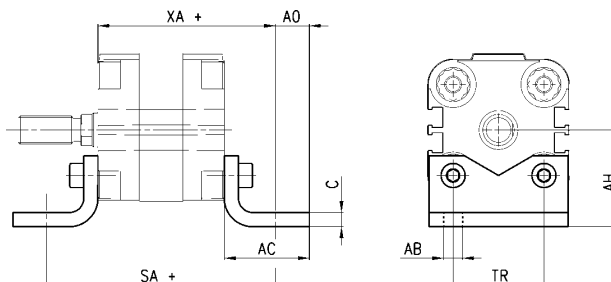


Foot mount Mod. B...

DIMENSIONS

Mod.	∅	C	SA	XA	TR	∅AB	AH	AO	AC
B-31-12	12	3	64	51	18	5,5	22	4,75	17,75
B-31-16	16	3	64	51	18	5,5	22	4,75	17,75
B-31-20	20	4	70	54	22	6,6	27	6,25	22,25
B-31-25	25	4	71,5	55,5	26	6,6	29	6,25	22,25
B-31-32	32	5	80,5	62,5	32	6,6	34	8,25	26,25
B-31-40	40	5	85,5	65,5	42	9	40,5	8,25	28,25
B-31-50	50	5,5	93,5	69,5	50	9	47	8,25	32,25
B-31-63	63	5,5	104	77	62	11	56,5	11,75	38,75
B-31-80	80	7,5	116	86	82	11	68,5	11,75	41,75
B-31-100	100	7,5	132,5	99,5	103	13,5	81	11,75	44,75

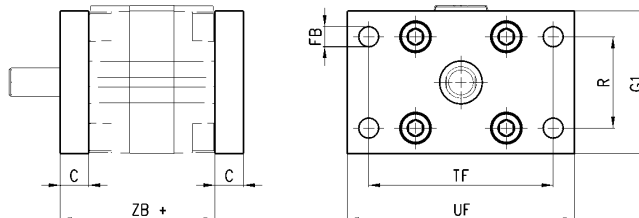


(+ add the stroke)

Rear and front flange Mod. D...

DIMENSIONS

Mod.	∅	C	ZB	TF	R	UF	G1	∅FB
D-E-31-12	12	10	48	43	-	55	29	5,5
D-E-31-16	16	10	48	43	-	55	29	5,5
D-E-31-20	20	10	48	55	-	70	36	6,6
D-E-31-25	25	10	49,5	60	-	76	40	6,6
D-E-31-32	32	10	54,5	65	32	80	50	7
D-E-31-40	40	10	55,5	82	36	102	60	9
D-E-31-50	50	12	57,5	90	45	110	68	9
D-E-31-63	63	15	65	110	50	130	87	9
D-E-31-80	80	15	71	135	63	160	107	12
D-E-31-100	100	15	81,5	163	75	190	128	14



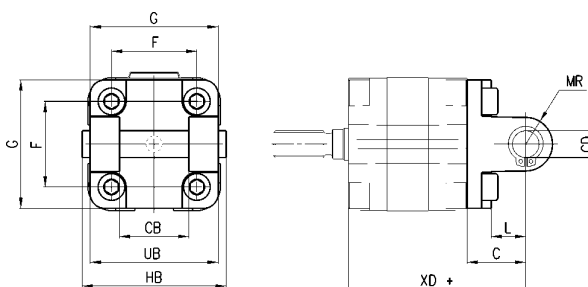
(+ add the stroke)

Rear trunnion Mod. C...

Female, complete with clip ring and pin.

DIMENSIONS

Mod.	∅	∅CD	L	C	XD	MR	F	G	CB	UB	HB
C-31-32	32	10	13	21	66,5	11	32	50	26	45	54
C-31-40	40	12	16	25	70,5	13	42	60	28	52	62
C-31-50	50	12	16	27	72,5	13	50	68	32	60	70
C-31-63	63	16	21	32	82	17	62	87	40	70	82
C-31-80	80	16	23	36	92	17	82	107	50	70	102
C-31-100	100	20	26	41	107,5	21	103	128	60	110	126



(+ add the stroke)

The company reserves the right to vary models and dimensions without notice. These products are designed for industrial applications and are not suitable for sale to the general public.