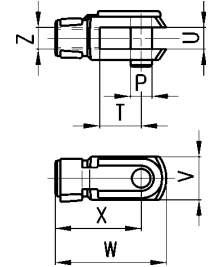


Rod Fork End Mod. G...

ISO 8140.

DIMENSIONS

Mod.	øcyl.	øP	T	U	V	W	X	Z
G-20	20	10	16	8	16	42	32	M8x1.25
G-25-32	25-32	10	20	10	20	52	40	M10x1.25
G-40	40-50	12	24	12	24	62	48	M12x1.25
G-50-63	63	16	32	16	32	83	64	M16x1.5

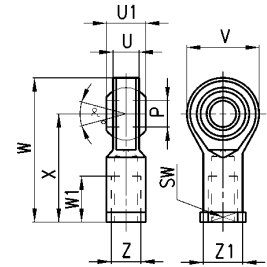


Swivel Ball Joint Mod. GA...

ISO 8139.

DIMENSIONS

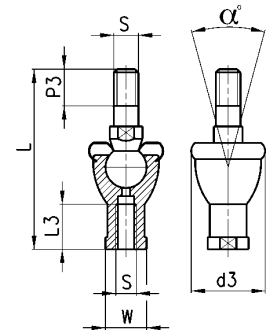
Mod	øcyl.	øP(H7)	U	U1	V	W	W1	X	Z	Z1	α°	SW
GA-20	20	8	9	12	20	48	16	36	M8x1.25	10	13	11
GA-32	25-32	10	10.5	14	28	56	20	43	M10x1.25	15	8	17
GA-40	40-50	12	12	16	32	65	22	50	M12x1.25	17.5	8	19
GA-50-63	63	16	15	21	42	83	28	64	M16x1.5	22	8.5	22



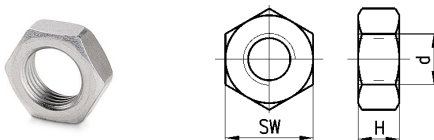
Piston Rod Socket Joint Mod. GY...

DIMENSIONS

Mod.	øcyl.	S	L	L3	W	P3	d3	α°
GY-20	20	M8x1.25	65	16	14	12	28	30°
GY-32	25-32	M10x1.25	74.5	18	17	15	32	30°
GY-40	40-50	M12x1.25	85	20	19	17	36	30°
GY-50-63	63	M16x1.5	114	27	22	23	47	22°



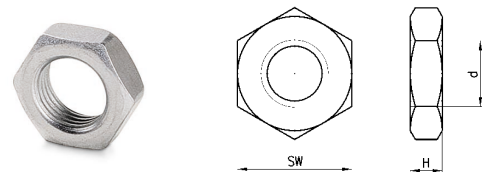
Piston Rod Lock Nut Mod. U...



DIMENSIONS

Mod.	øcyl.	d	H	SW
U-20	20	M8x1.25	5	13
U-25-32	25-32	M10x1.25	6	17
U-40	40-50	M12x1.25	7	19
U-50-63	63	M16x1.5	8	24

Nose Nut Mod. V...



DIMENSIONS

Mod.	øcyl.	d	H	SW
V-12-16	20	M16x1,5	5	22
V-27-25	25	M18x1,5	5	24
V-20-25	32	M22x1,5	7	32
V-42-32	40	M30x1,5	8	-