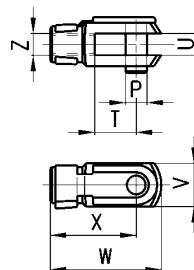
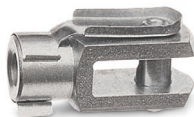


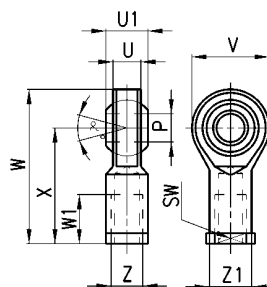
## Rod fork end Mod. G-90...



## DIMENSIONS

Mod	ø cyl.	ø P	T	U	V	W	X	Z
G-90-32	32	10	20	10	20	52	40	M10x1.25
G-90-40	40	12	24	12	24	62	48	M12x1.25
G-90-50-63	50-63	16	32	16	32	83	64	M16x1.5

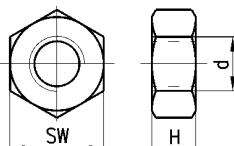
## Swivel ball joint Mod. GA-90...



## DIMENSIONS

Mod	ø cyl.	ø P (H7)	U	U1	V	W	W1	X	Z	Z1	α° SW
GA-90-32	32	10	10.5	14	28	56	20	43	M10x1.25	15	8 17
GA-90-40	40	12	12	16	32	65	22	50	M12x1.25	17.5	8 19
GA-90-50-63	50-63	16	15	21	42	83	28	64	M16x1.5	22	8.5 22

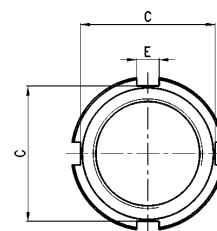
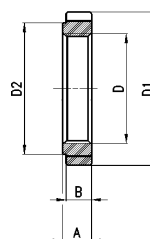
## Piston rod lock nut Mod. U-90...



## DIMENSIONS

Mod.	ø cyl.	d	H	SW
U-90-32	32	M10x1.25	6	17
U-90-40	40	M12x1.25	7	19
U-90-50-63	50-63	M16x1.5	8	24

## Nose nut Mod. V...



## DIMENSIONS

Mod.	ø cyl.	D	D1	D2	A	B	C	E
V-92-32	32	M30x15	42	36	8	7	37	6.2
V-92-40	40	M38x15	50	48	10	9	44	7.2
V-92-50-63	50-63	M45x15	60	56	10	9	53	7.2